

## Initial Setup Instructions for the Ovation U720 USB Broadband Card

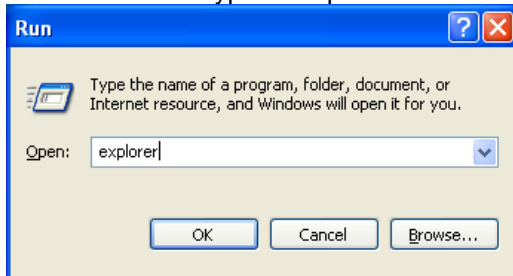
1. Dial 800-593-2207 to activate your card.
  - a. You will be asked to enter an 8, 11, or 18 digit ESN (Electronic Serial Number). Your ESN can be located on the underside of the data card. Please select the appropriate option for your ESN.
  - b. You will be asked to create a 4 digit security PIN.
  - c. Then you will be asked to enter your 12 digit Activation PIN. This PIN can be found in the upper right hand side of the free 5 Megabytes Activation Card which is included with your purchase. This free Activation Card will expire on midnight of the day of activation. If you did not receive a free activation card, please call customer service at 800-593-2207.

PIN activations can take from 15 minutes to 4 hours depending on network delays. Typically, it takes about 15 minutes.

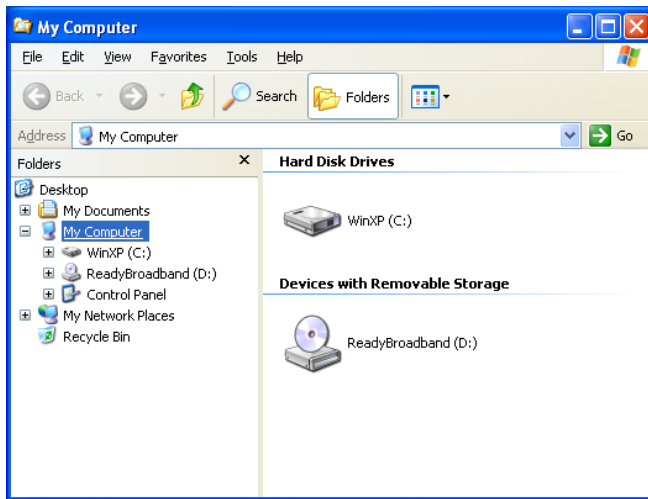
2. Place CD in computer and install the provided third party connection manager software.
  - a. If the installation autorun does not start automatically, you will need to run it manually by going to:
    - i. Start -> Run



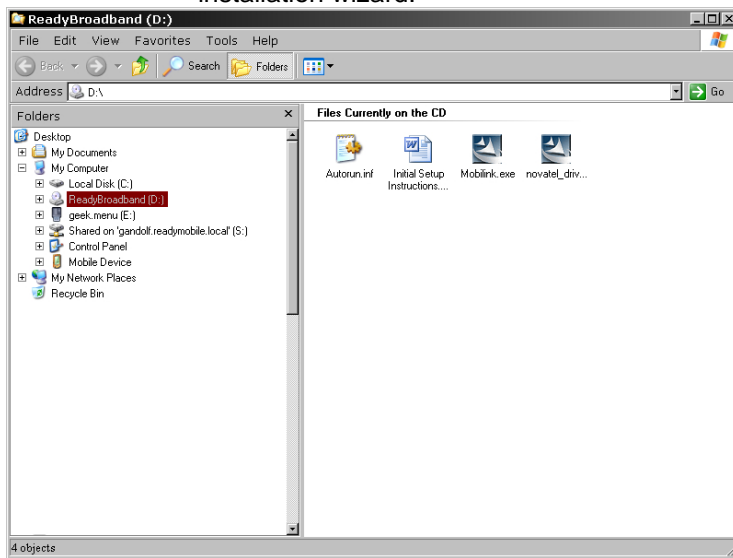
- ii. Type in 'explorer' without the quotes.



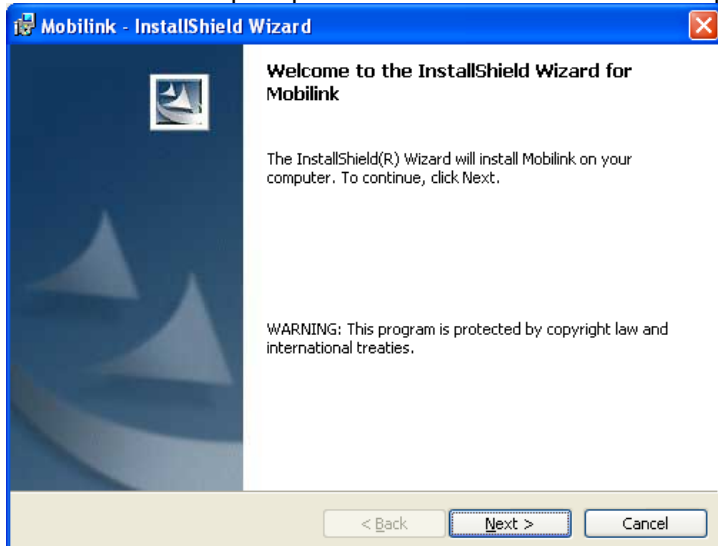
- iii. In the left menu, expand 'My Computer' by clicking the plus sign next to it.

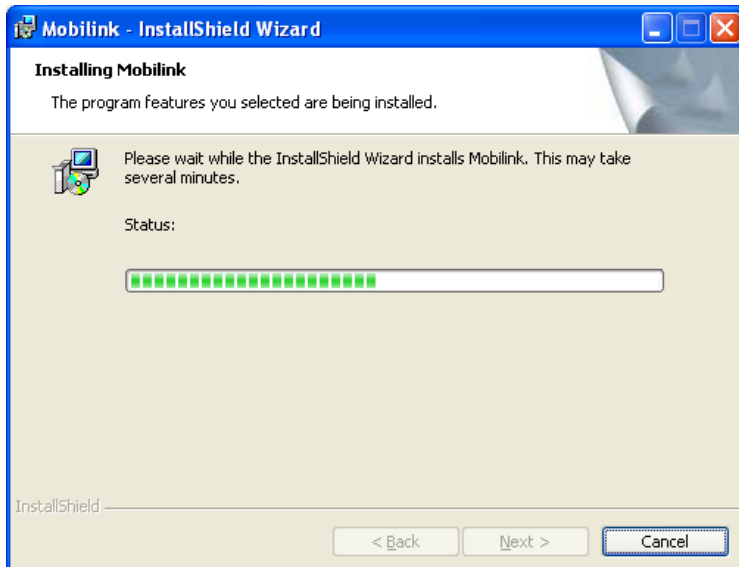
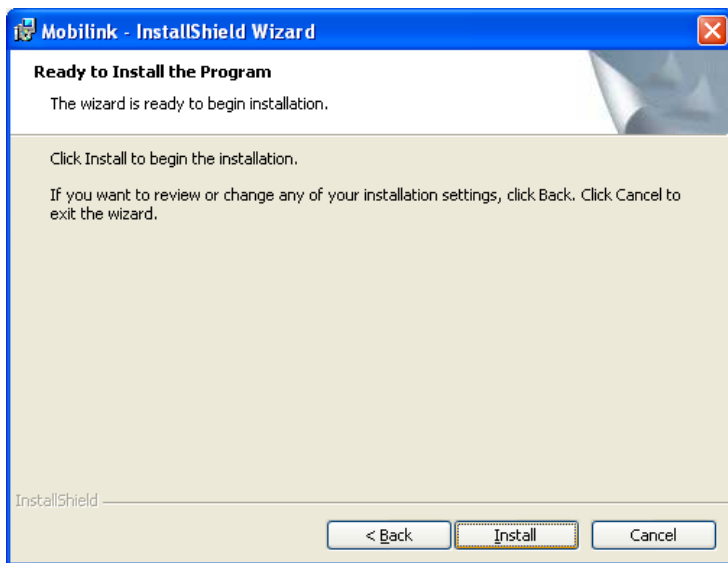
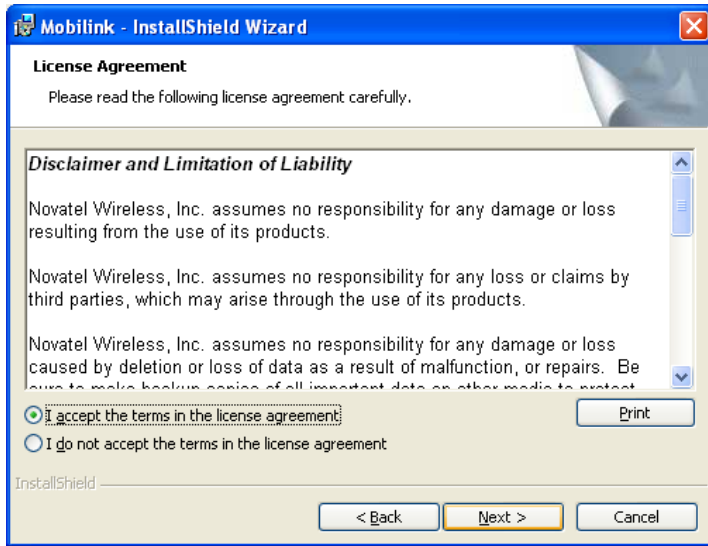


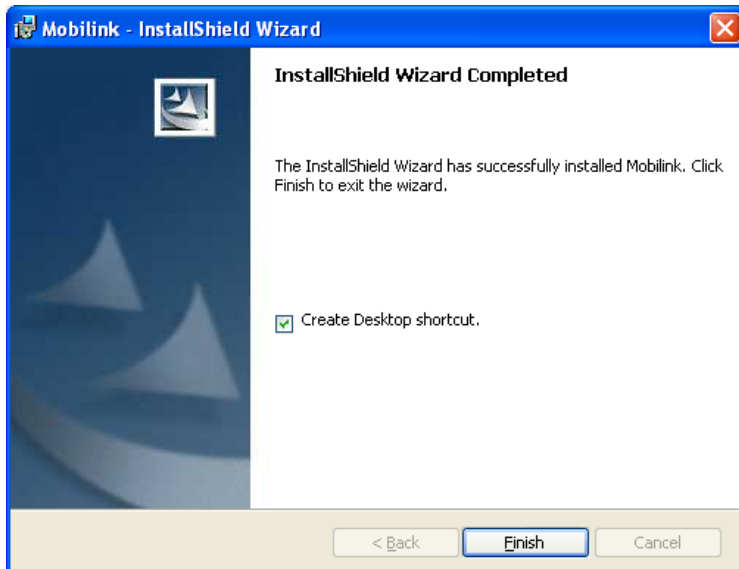
- iv. Locate your CD drive and expand it, it may be labeled 'ReadyBroadBand'. Double click on 'Mobilink.exe' or 'Setup.exe' (.exe may not be visible text) in the right menu. This will open the installation wizard.



- b. Follow the prompts on the installation wizard to complete the installation process.



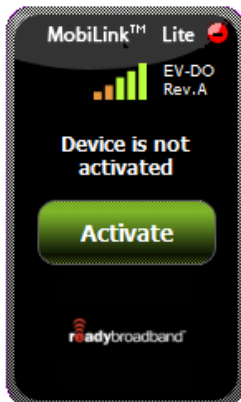




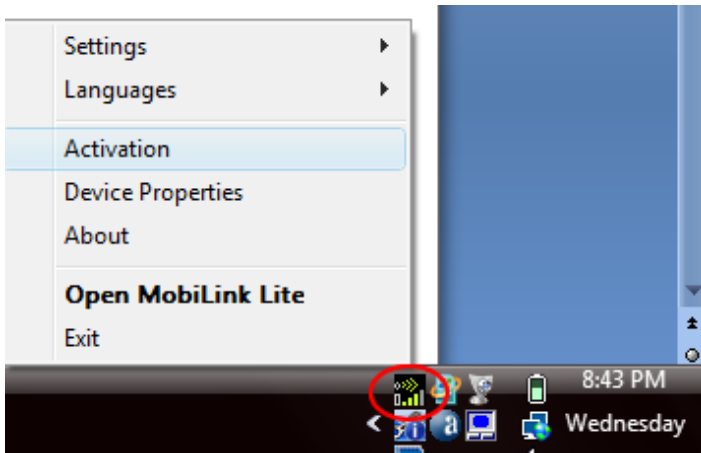
3. Insert data card into your computer after installing connection manager software.
  - a. Your computer will proceed to install the new hardware.
    - i. If asked to locate drivers, the installation copied the drivers to the <C:\Program Files\Novatel Wireless\MobiLink\Drivers> directory.
4. Plug in your Novatel Ovation U270 USB data card into a USB slot on your computer and lift the antenna in an upward position. See figure below:



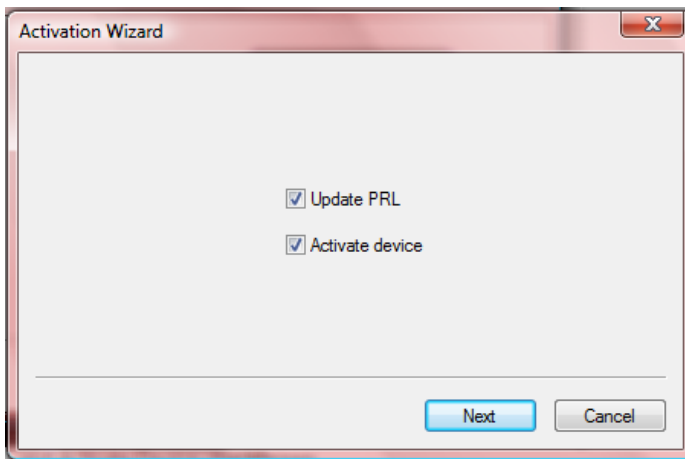
5. Activating your device.
  - a. Click the Activation button to activate your data card. Note that depending on your coverage area, the EV-DO<sup>1</sup> or 1XRTT<sup>2</sup> data rate designation will be displayed.



(You can also right click on the tray icon and then click activate)



- b. Check the Update PRL and Activate Device checkboxes and click next (this will take a couple minutes)



- c. After the activation is successful your data card will restart and then you can proceed to the Step 4 Connecting to the Internet

## 6. Connecting to the Internet

- a. Click the Connect button. Once connected, open your Internet Browser.



## Purchasing More Megabytes

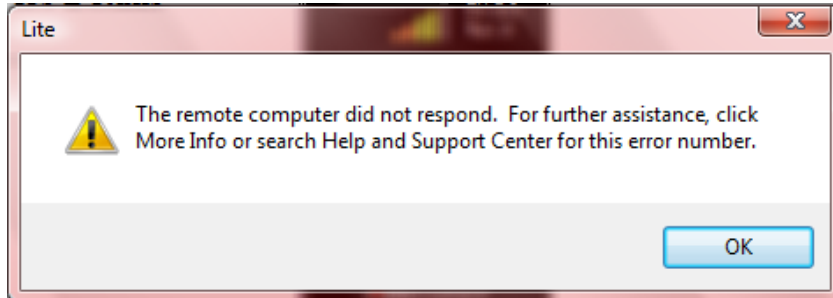
Additional Megabytes can be purchased at the store in which you purchased your data card, or online at <https://storefront.readymobile.com>.

## Managing Your Account

You can view your current account balance and activate top up PINs at <http://selfcare.readybroadband.com>. To access your account information online, enter your USB Card ESN and the 4 digit PIN you created in step 1 b.

## Common Problems and Solutions

The remote computer did not respond. For further assistance (Error Message)



This message is caused by one of two reasons. One reason is because your account is not active due to running out of MBs or access days. The other reason is because the card needs to be activated again from within the software (see Step 3 Activating Device)

Device is not recognized (Error Message)

First shut down your computer. After a few minutes, restart your computer. If that does not work, try uninstalling the MobiLink Lite software. Unplug the data card and then click on your Start Menu, then Control Panel, and then Add/Remove Software. Select the MobiLink Lite software program and uninstall it. Plug your data card back in and let it go through the installation process again. You may also try connecting the card into another USB port on your computer and restarting the software. If your device still is not recognized, call customer service.

For more information on how to use your new Ready Broadband data card, please visit our website [www.readybroadband.com](http://www.readybroadband.com). We provide recommendations on how to use your new service to get the maximum benefit from your bandwidth limits.

Rates and estimated <sup>3</sup> usages:

Card – Data	Expiration	Emails	Photos	Music
\$25 – 100MB	30 days	10,240	1,706	25
\$45 – 200MB	30 days	20,480	3,414	50
\$75 – 500MB	30 days	51,200	8,533	125

<sup>1</sup> EV-DO (High Speed) Data Rates: Downlink rate = 3.1 Megabits per second. Uplink rate = 1.8 Megabits per second

<sup>2</sup> 1XRTT Data Rates: 14.4 Kilobits per second maximum

<sup>3</sup> Estimates based on the following file sizes: Email 10KB, Photo 60KB and Music 4MB. Rates and features are subject to change without notice. Taxes, surcharges and fees are included.

5 Megabyte FREE activation card included in your card purchase expires at midnight on the day of activation. Ready mobile is not responsible for the loss, theft or unauthorized use of the free 5 Megabyte data card.

To contact customer service, please call 800-593-2207