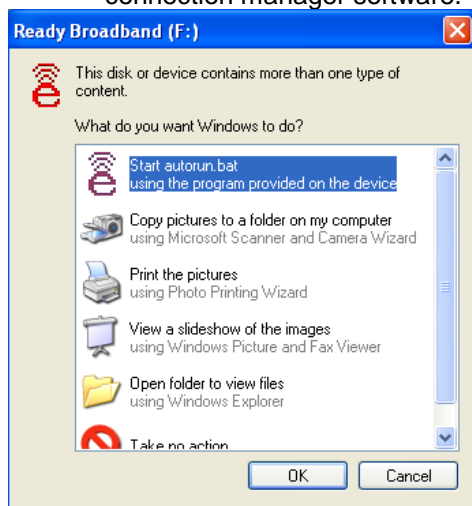


## Initial Setup Instructions for the Novatel Wireless U760 USB Broadband Card

1. Dial 800-593-2207 to activate your card.
  - a. You will be asked to enter an 8, 11, or 18 digit ESN (Electronic Serial Number). Your ESN can be located on the underside of the data card. Please select the appropriate option for your ESN.
  - b. You will be asked to create a 4 digit security PIN.
  - c. Then you will be asked to enter your 12 digit Activation PIN. This PIN can be found in the upper right hand side of the free 5 Megabytes Activation Card which is included with your purchase. This free Activation Card will expire on midnight of the day of activation. If you did not receive a free activation card, please call customer service at 800-593-2207.

PIN activations can take from 15 minutes to 4 hours depending on network delays. Typically, it takes about 15 minutes.

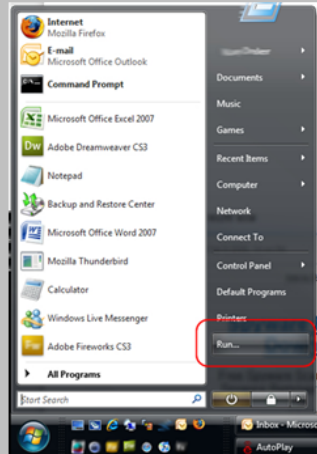
2. Insert the USB flash drive provided. You should get prompted to automatically run the software provided on the flash drive. Click "Run autorun.bat" to install the third party connection manager software.



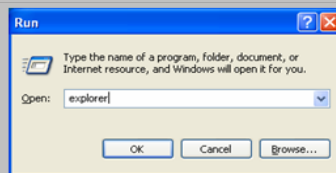
Note: If you fail to receive a prompt similar to the picture above, please follow the directions in grey below. You may skip the grey box if you receive the prompt above.

## Directions for manual launch of installation software (Optional Step)

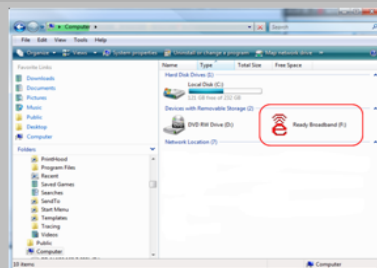
If the installation autorun does not start automatically, you will need to run it manually by going to: Start -> Run



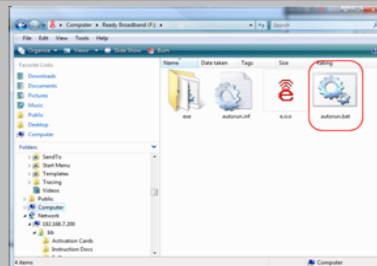
Type in 'explorer' without the quotes.



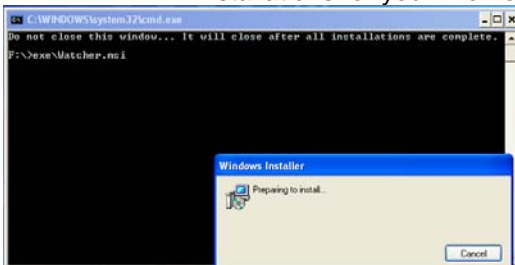
In the left menu, expand 'My Computer' by clicking the plus sign next to it.



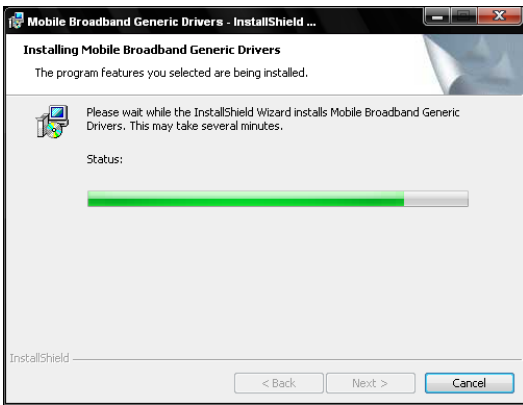
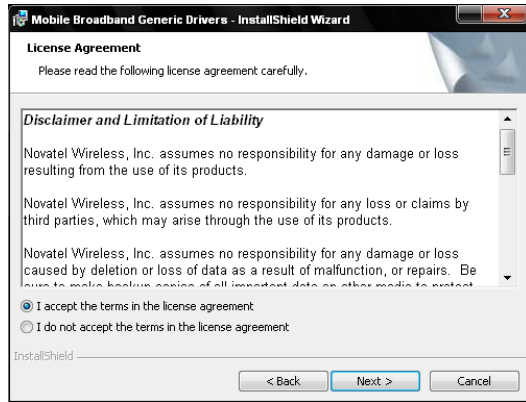
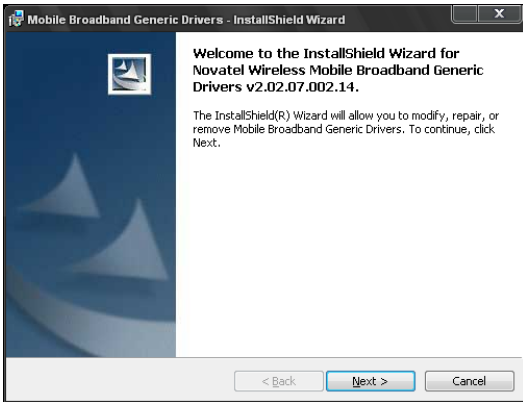
Locate your USB Flash drive and expand it, it may be labeled 'Ready BroadBand'. Double click on 'autorun.bat' (bat may not be visible text) in the right menu. This will open the installation wizard.



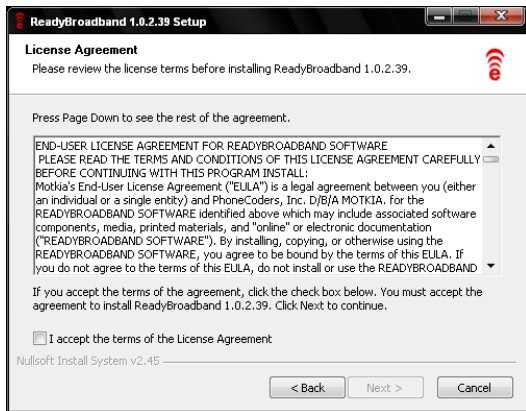
3. Your computer will then auto install the drivers needed for your Novatel Wireless U760 USB data card to work with your computer.
  - a. You will see a black command line window, this window launches the two installations for you. Do not close it unless you wish to cancel the installation.



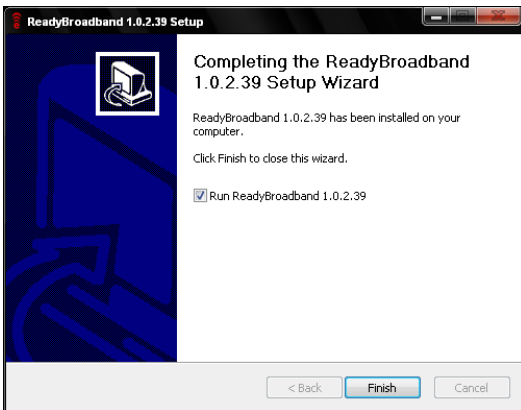
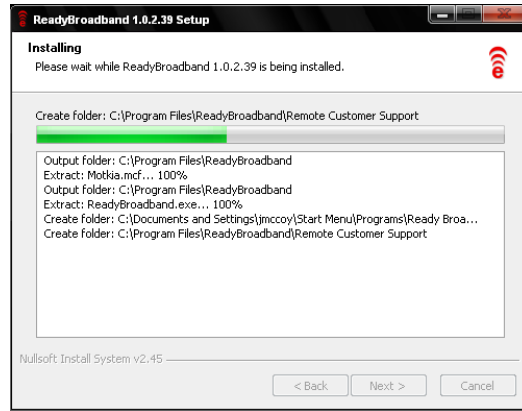
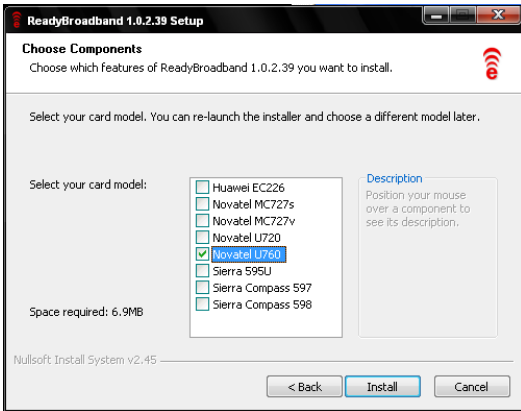
- b. Follow the prompts to install the drivers and the software for your data card.



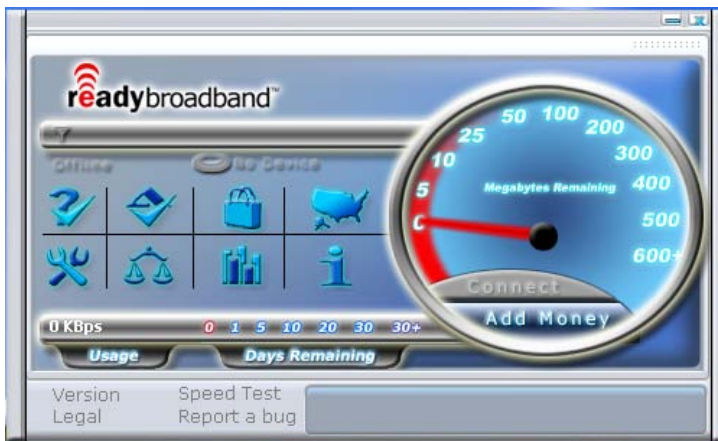
c. Follow the prompts to install Ready Broadband Connection Manager software.



4. From the device list select Novatel U760 and click install.



5. Plug in your Novatel Wireless U760 USB data card into a USB slot on your computer.
6. Wait for your device to be recognized by your computer then click connect.



**Windows 7 Notice:**

Some devices, when used on Windows 7, will get recognized as an extra storage device. If your connection manager is stating that No Device detected for more than 5 minutes, then please follow the steps below to resolve this issue.

1. Click on the Start Button
2. Click on "Computer"
3. A new drive should be listed in the window that pops up
4. Right click on the extra drive listed and select "Eject" from the popup menu
5. The computer will then continue along the process of recognizing the USB device

**Purchasing More Megabytes**

Additional Megabytes can be purchased at the store in which you purchased your data card, or online at <https://storefront.readymobile.com>.

**Managing Your Account**

You can view your current account balance and activate top up PINs at <http://selfcare.readybroadband.com>. To access your account information online, enter your USB Card ESN and the 4 digit PIN you created in step 1 b.

**Common Problems and Solutions**

Device is not recognized (Error Message)

First shut down your computer. After a few minutes, restart your computer. If that does not work, try uninstalling the Readybroadband Connection Manager software. Unplug the data card and then click on your Start Menu, then Control Panel, and then Add/Remove Software. Select the Readybroadband software program and uninstall it. Plug your data card back in and let it go through the installation process again. You may also try connecting the card into another USB port on your computer and restarting the software. If your device still is not recognized, call customer service at 1-800-593-2207.

For more information on how to use your new Ready Broadband data card, please visit our website [www.readybroadband.com](http://www.readybroadband.com). We provide recommendations on how to use your new service to get the maximum benefit from your bandwidth limits.

Rates and estimated <sup>3</sup> usages:

Card – Data	Expiration	Emails	Photos	Songs
\$25 – 100MB	30 days	10,240	1,706	25
\$45 – 200MB	30 days	20,480	3,414	50
\$75 – 500MB	30 days	51,200	8,533	125

<sup>1</sup> EV-DO (High Speed) Data Rates: Downlink rate = 3.1 Megabits per second. Uplink rate = 1.8 Megabits per second

<sup>2</sup> 1XRTT Data Rates: 14.4 Kilobits per second maximum

<sup>3</sup> Estimates based on the following file sizes: Email 10KB, Photo 60KB and Song 4MB. Rates and features are subject to change without notice. Taxes, surcharges and fees are included.

5 Megabyte FREE activation card included in your card purchase expires at midnight on the day of activation. Ready mobile is not responsible for the loss, theft or unauthorized use of the free 5 Megabyte data card.

To contact customer service, please call 800-593-2207